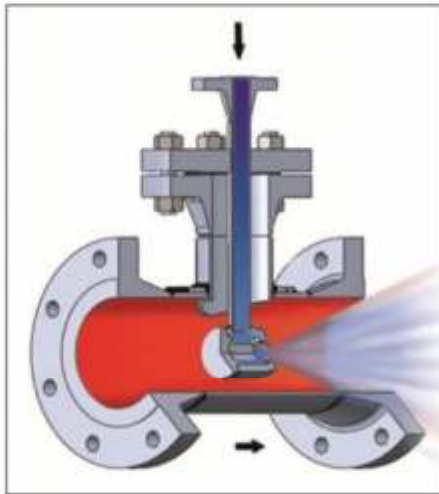


Desuperheaters



Fixed Nozzle Desuperheater (Hollow Cone) MODEL NO: FND

Applications

Steam is quite often throttled and superheated for its efficient distribution. To maximise its heat transfer properties its steam temperature needs to be brought down as close to saturation as possible. Bomafa Desuperheaters are designed, manufactured and built to reduce the temperature of the superheated steam accurately for optimal heat transfer and efficiency.

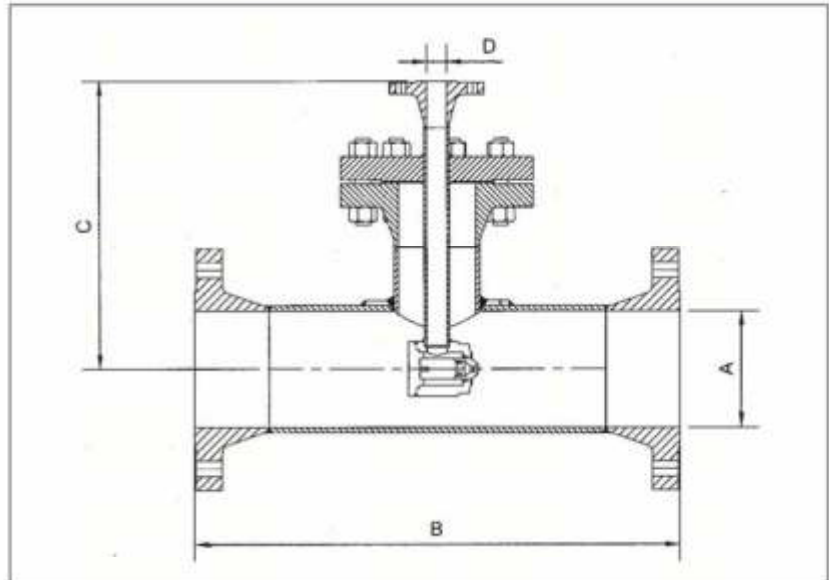
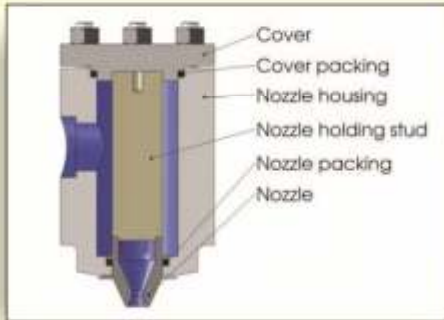
Benefits

- Detailed steam system knowledge is applied for design and sizing.
- Improved heat transfer.
- Continuous process performance.

Key highlights

- One of the most simplest forms of desuperheaters and is also termed as a mechanical desuperheater.
- The basic principle of operation is to desuperheat the steam by introducing water droplets through a spraying nozzle and breaking the water droplets into a fine mist at the point of exit.
- The performance of this desuperheater corresponds directly to the design of the spray nozzle. This unit can handle low turndown requirements usually upto 3:1.
- Offers negligible pressure drop across the system.
- Requires typical superior water pressure than the steam operating pressure [recommended superior water pressure is 5 bar (g)].
- Due to this simple construction it is one of the most economical desuperheater available in the market.
- Flanged / Butt-weld end connections are available.





Desuperheater (size in mm)	Main Steam Pipe (size in mm)
40-80	100-200
40-100	150-350
40-150	250-500
40-150	350-600

Dimensions (size in mm)			
A	B	C	D
80	1000	400	15, 20
100	1000	425	15, 20, 25
150	1000	475	15, 20, 25
200	1000	550	15, 20, 25, 40
250	1200	600	15, 20, 25, 40
300	1200	650	15, 20, 25, 40
350	1300	700	15, 20, 25, 40
400	1300	750	15, 20, 25, 40
450	1500	800	15, 20, 25, 40, 50
500	1500	850	15, 20, 25, 40, 50
550	1500	900	15, 20, 25, 40, 50
600	1500	950	15, 20, 25, 40, 50

Bomafa is a leading global supplier of Severe Service Valves and products that improves productivity and quality in Utility and Process Industries. For the closest location and contact, visit our website: www.bomafa-india.com



Notes:-

- Material of construction:
 - Desuperheater Pipe: SA 106 Gr. B, SA 335 P11, SA 335 P22, SA 335 P91.
 - Nozzle: SS 304/ 316/ DIN 1.4122.
 - Injection Water Pipe: SA 106 Gr. B, SA 335 P11, SA 335 P22, SA 335 P91.
 - Flanges: SA 105, SA 182 F11, SA 182 F22, SA 182 F91.
- Dimensions can be engineered to fit existing piping/ flange requirements.
- Dimensions are subject to change without notice.
- For higher sizes consult factory.
- Different grades of material also available as an option.



An ISO:2008 / ISO 14001:2004 & OHSAS 18001:2007 certified company

Contact us:

BOMAF A Special Valve Solutions Private Limited

Office:
A 606 / 607 Safal Solitaire, New YMCA Club, Besides Divya Bhaskar , S.G. Highway, Ahmedabad - 380 015.
Ph.: +91 79 40075613 / 40083825/26/27

Works:
Plot No. 285/2, Panchratna Estae, Nr . Ramol Bridge, Ahmedaba -382445 - India.
Ph. : +91 96876 64036 / 37 E-mail: info@bomafa-india.com